

NEA 1991

DISPOSAL OF RADIOACTIVE WASTE:

CAN LONG-TERM SAFETY BE EVALUATED?



NEA 1991

A Collective Opinion

of the

Radioactive Waste Management Committee
OECD Nuclear Energy Agency

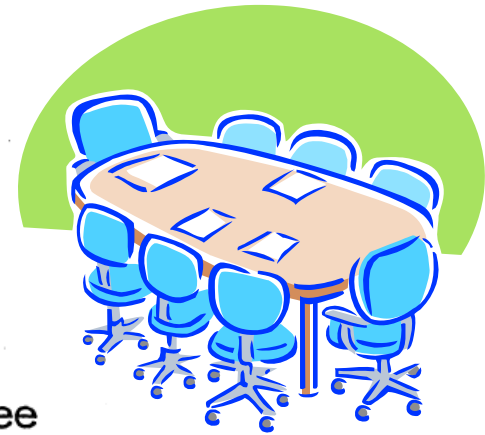
and the

International Radioactive Waste Management Advisory Committee
International Atomic Energy Agency

endorsed by the

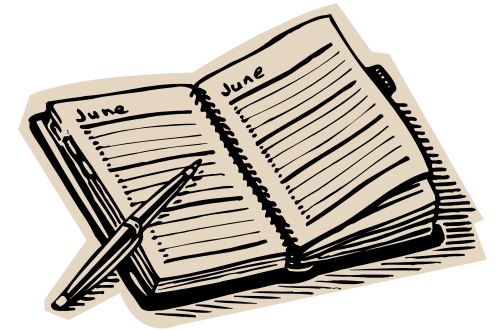
Experts for the Community Plan of Action
in the Field of Radioactive Waste Management
Commission of the European Communities

Paris, 1991



NEA 1991

CONTENTS



Executive Summary

The Need to Evaluate Long-Term Safety

Points of Consensus

What can be Expected from Safety Assessments

Judging Safety

Conclusions: The International View

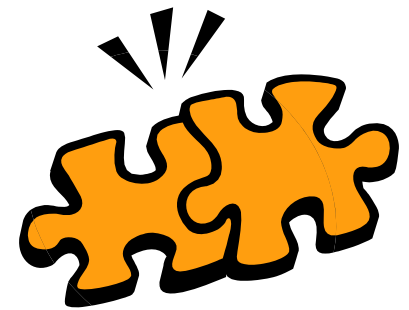
NEA 1991

CONCLUSIONS : THE INTERNATIONAL VIEW

International co-operation - through information exchange and joint projects - plays a substantial role in the development of methods for safety assessment. In particular, international co-operation promotes periodic and systematic reviews of the state-of-the-art in this field, and contributes to informed and objective debate among specialists.



NEA 1991



CONCLUSIONS : THE INTERNATIONAL VIEW

Following such a review, the NEA Radioactive Waste Management Committee and the IAEA International Radioactive Waste Management Advisory Committee

- ***Recognise*** that a correct and sufficient understanding of proposed disposal systems is a basic prerequisite for conducting meaningful safety assessments,
- ***Note*** that the collection and evaluation of data from proposed disposal sites are the major tasks on which further progress is needed,
- ***Acknowledge*** that significant progress in the ability to conduct safety assessment has been made,
- ***Acknowledge*** that quantitative safety assessments will always be complemented by qualitative evidence, and
- ***Note*** that safety assessment methods can and will be further developed as a result of ongoing research work.

NEA 1991



CONCLUSIONS : THE INTERNATIONAL VIEW

Keeping these considerations in mind, the two Committees

- **Confirm** that safety assessment methods are available today to evaluate adequately the potential long-term radiological impacts of a carefully designed radioactive waste disposal system on humans and the environment, and
- **Consider** that appropriate use of safety assessment methods, coupled with sufficient information from proposed disposal sites, can provide the technical basis to decide whether specific disposal systems would offer to society a satisfactory level of safety for both current and future generations.

This Collective Opinion is *endorsed* by the CEC Experts for the Community Plan of Action in the Field of Radioactive Waste Management.

